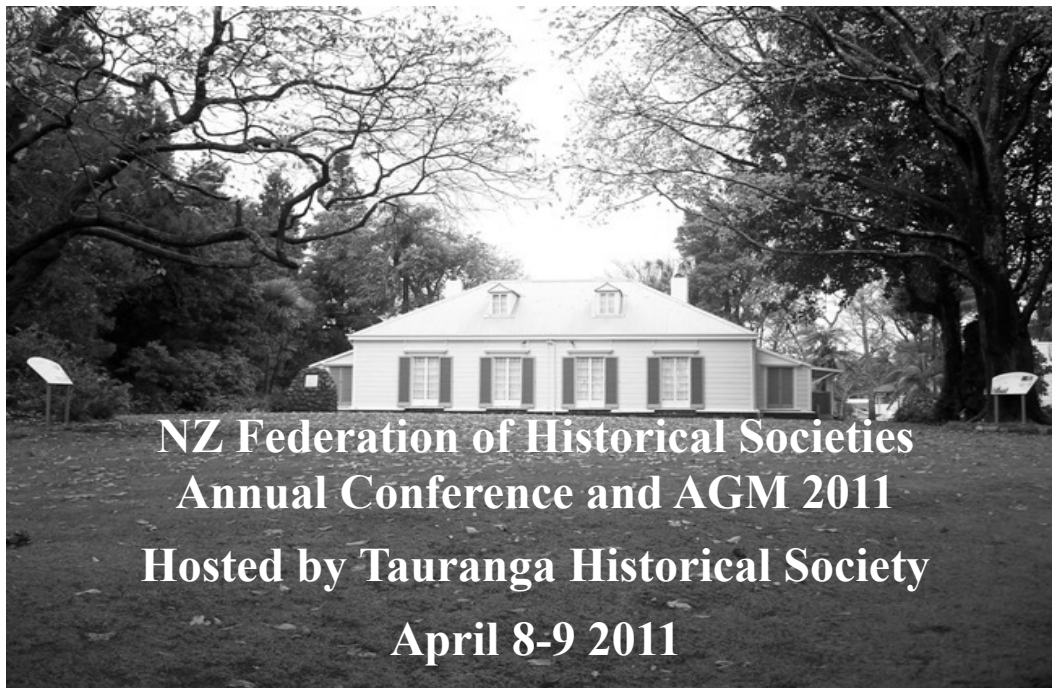


Keeping in Touch

Newsletter for NZ Federation of Historical Societies Volume 4 Issue 3 September 2010

www.nzhistoricalsocieties.org.nz



Next year's conference and Annual General Meeting is set to happen on the weekend of the 8th and 9th of April, at Tauranga's "Historic Village on 17th", 17th Avenue West, Tauranga. More details in the next issue.

Do YOU have an important event coming up in the next 12 months (or longer)???

Let us know, so we can include YOUR EVENT on the newsletter calendar.



Calendar 2010

May through November 2010

**Ka Takata Whenua o Waihao Exhibition,
Waimate Historical Museum**

18 September –3 October 2010

Auckland City Heritage Festival

24 September-3 October 2010

Franklin Heritage festival

22-31 October 2010

Beca Heritage Week, Christchurch

Labour Day weekend 2010

**Annual Bookarama fundraiser,
Waimate Historical Museum**

6 November 2010

**Auckland Regional Gathering of
historical societies**

Nov 2010 to Jan 2011

Christmas Tree Competition and Christmas display, Waimate Historical Museum

24 December 2010

Saving the Kingston Flyer Railway Fund Raiser. Event contacts:

Karl Barkley 027 5940090

karlsouthern-f-locotrust@hotmail.com

8-9 April 2011

NZ Federation of Historical Societies Annual Conference and AGM at Tauranga

Next issue due out November 2010

Contact Lisa Truttman (editor) : 19 Methuen Road, Avondale, Auckland 0600, phone (09) 828-8494
or email historian@avondale.org.nz

Views expressed in this newsletter are not necessarily those of the NZ Federation of Historical Societies Inc.



NZ Federation of Historical Societies

Northern Regional Gathering

at Pukekohe 6 November 2010

**Hosted by
Franklin Historical Society**



Greetings fellow societies

As you may all be aware the Franklin Historical Society is hosting the NZFHS regional meeting in Pukekohe this year. The date of the meeting is Saturday 6 November and the programme for the day is set out below (which is subject to alteration(s) should they be required).

Programme

9.30am

Meet at the Pukekohe East Church for cup of tea and registration

10.00am -11.45am

History and tour of the Pukekohe East Church & cemetery followed by a look at the Pukekohe Pioneer Cottage

12 noon – 12.30pm

Lunch & further registrations (Bring own lunch – tea & coffee provided)

12.30pm - 3.30pm

Regional meeting to include:-
Welcome & introduction

Group roundups

Speaker from the Karaka Historical Society on how they went about organising and raising funds for a new building for their museum (contacted but yet to confirm)

Lisa Truttman on websites and technology (confirmed)

Any NZFHS committee member present to explain their role and give an insight into the workings of the NZFHS and what assistance is available from the NZFHS

If time permits the meeting will be thrown open to general discussion

3.30pm

Afternoon tea

COST: The cost has been set at \$10.00 per person. Please bring payment, in cash, along to the registration. It covers the costs of the speakers, room hire, a donation to the Pukekohe East Church Preservation Society, morning and afternoon teas and administration expenses.

The Pukekohe East Church is located on Runciman Road on the road into Pukekohe from the Bombay Service Centre from the Pukekohe exits north and south. The church was attacked by about 200 hostile Maoris on 14 September 1863 and was defended by a garrison of 19 settlers and one boy. The Pukekohe East Church preservation society will be in attendance on the day.

From there we will head into Pukekohe and have a look around the Pukekohe Pioneer Cottage that is run by your hosts for the day, the Franklin Historical Society.

Following that lunch will be from 12 noon to 12.30pm which will be at our rooms. Tea and coffee will be provided but please bring your own lunch OR you can take advantage of the many cafes and restaurants that Pukekohe has got to offer.

Our rooms are located on the corner of Wesley Street and Edinburgh Street (more or less opposite the Town Hall in the Old Borough Building which is in the centre of town). We share the building with the local Plunket Society.

For further details contact:

Ross Miller
Secretary
Franklin Historical Society Inc
Email: armiller@xtra.co.nz
or 1 Helvetia Road Pukekohe 2120.

NZ Historic Places Trust changes

A letter to Keeping in Touch, by past-editor Robin Astridge.

"I note with some concern the item under the heading "Other Organisations" on page 6 of the April 2010 issue. By publishing this brief precis, without comment, it could be discerned that the New Zealand Federation of Historical Societies Inc support the proposed moves by the NZHPT – I would question that interpretation.

"In the 1950s a group of concerned individuals and many historical societies met to discuss the rampart loss of heritage sites and buildings in the post war development boom. From this preliminary, tentative step grew the formation and development of the NZHPT into the organization we know today. The current Government proposal removes from the NZHPT any vestige of democratic involvement by the public, with the demise of regional committees and the three seats on the Trust board elected by members.

"The question I now raise is: Perhaps now is the time for the proposed changes to be challenged strongly by the public. The New Zealand Federation of Historical Societies is in a strong position to be an advocate if such an action is felt by individuals and historic societies. There is a strong membership, is a national organization, has in place a newsletter and magazine which can be used to quickly raise public awareness of issues such as this.

"I strongly urge the New Zealand Federation of Historical Societies Inc to counsel against the proposed NZHPT changes and publicly state their position through any media means possible.

"I remain yours
R B Astridge QSM "

Editor's note: Thanks for your letter Robin. I don't think that publishing part of the press release from NZHPT in Keeping In Touch constitutes support by anyone in the Federation of a position expressed by anyone else connected with NZHPT regarding the proposed/planned changes to their organisational structure.

There have been other reactions to the news of the changes from elsewhere within the Federation's membership.

Otaki Historical Society reported in their May newsletter:

"We were most concerned to learn that there is a proposal to disestablish local branch committees of the New Zealand Historic Places Trust. These

committees, which have been in existence for more than 50 years, are the voice of the members of the trust. During that time they have not only advocated for heritage, but have carried out useful work in protecting, marking restoring, researching, lecturing, visiting and writing about historic places. This is work which could not have been carried out by the small number of paid staff. In addition, branch committees have unrivalled knowledge of their own areas. We have written urging that these committees be retained."

The Avondale-Waterview Historical Society wrote this letter to NZHPT's Wellington headquarters, in response to the annual subscription renewal in August.

"Dear Sirs,

"The Avondale-Waterview Historical Society voted on Saturday 7 August 2010 to decline your reminder of membership renewal. We noted, unfavourably, the price increase in the membership subscription, but we have also felt a great deal of disquiet over the moves this year to eliminate local committees within the NZ Historic Places Trust structure. We feel that this will impact negatively on local participation regarding heritage issues, and have a negative follow-on effect in terms of national policy towards our heritage.

"The costs of membership have, for some time, outweighed any benefits to our members, and yet still the Trust asks us for more and more money, while limiting opportunities for feedback and comment from members as to policies and procedures.

"In the light of this, after a number of years as members almost from our incorporation in 2002, we now advise that we resign. "

Society News & Views

Ashburton

From the Museum's July newsletter:

"An interesting, but in many ways frustrating exercise we took part in recently was suggesting names for the streets in the new industrial estate. The museum was asked to suggest names with a historical connection with the area, but it eventually became apparent our definitions of "historical" and "area" were somewhat different than those of the people who had to make the decision. However, it was good that we were asked and at least one name that met our original brief made it through into the final list."

Avondale-Waterview

2010 so far has seemed to be quite a busy year for our Society. The 150th birthday celebrations for Avondale's St Ninian's Church building,

organised by AWHS, has helped raise public awareness of the building's heritage value. Auckland City Council have now put a restoration re-opening project in place, due to begin in the spring.

With funding from Avondale Community Board, and the technical wizardry of John Russell from St Jude's Anglican Church, we organised the digitisation of the 1990-1991 Avondale Oral History Project, 49 cassette tapes converted to 49 audio CDs. Four sets were created; one for the Society, one for St Jude's, one for Avondale Library and the fourth for the Sir George Grey Special Collections at Auckland City Library. This project will ease access to a valuable collection of heritage information on our district's past. The formal handover ceremony on 3 August at Avondale Library was attended by around 50 people, including students from Avondale Intermediate School.

The Society's Rosebank Horticultural History project, Stage 1, is drawing to a close, with a report pending presentation to the Society by historian John Adam. After the Society has had a chance to study John's report, we'll discuss with him, and any other groups or individuals interested in the history of the Rosebank Peninsula, as to how to proceed with Stage 2, the wider study of the general history of the area, as well as follow up research points.

The new Pt Chevalier Historical Society mentored by our President Lisa Truttman has now published the second edition of *Pt Chevalier Memories*, which is selling very well (first print of 300 nearly gone at time of writing), established regular general and committee meetings, newsletter, and are now planning for a celebration next year of the 150th anniversary of settlement in that district.

Lisa is also involved with five events in this year's Auckland City Heritage Festival. *Editor's note: My apologies, therefore, for the lateness of this newsletter. Pressures of work, AWHS business, as well as that for Pt Chevalier HS, West Auckland HS, the Heritage Festival, and the inconvenience of the dratted 'flu season, have caused unavoidable delays.*

Birkenhead

From the Society's September newsletter:

"As most will know our long serving Treasurer, Glad Durham, passed away recently. Glad was one of the farsighted people who founded the society in 1979. He contributed to our society in many ways: Treasurer for 27 years, very active in restoring the Museum building, driver on trips for many years, took bookings for all our trips,

walking encyclopedia of Birkdale history, and a general "I'll do it person" when a job needed an owner. We will certainly miss Glad and we are determined that our work will go on."

Birkenhead's work is certainly going on: this month, they worked with the local community library to organise a bus tour around landmarks of Birkenhead, which terminated at the Society's museum. Around 80 people went through the museum that day, according to Ray Johanson.. Well done to all concerned.

Otahuhu

From the Presidents report, May 2010

"I mentioned in my last report about our rooms being plagued by leaks and the disruption it was causing. Since then the council has had another attempt to rectify the problem and the situation is much improved.

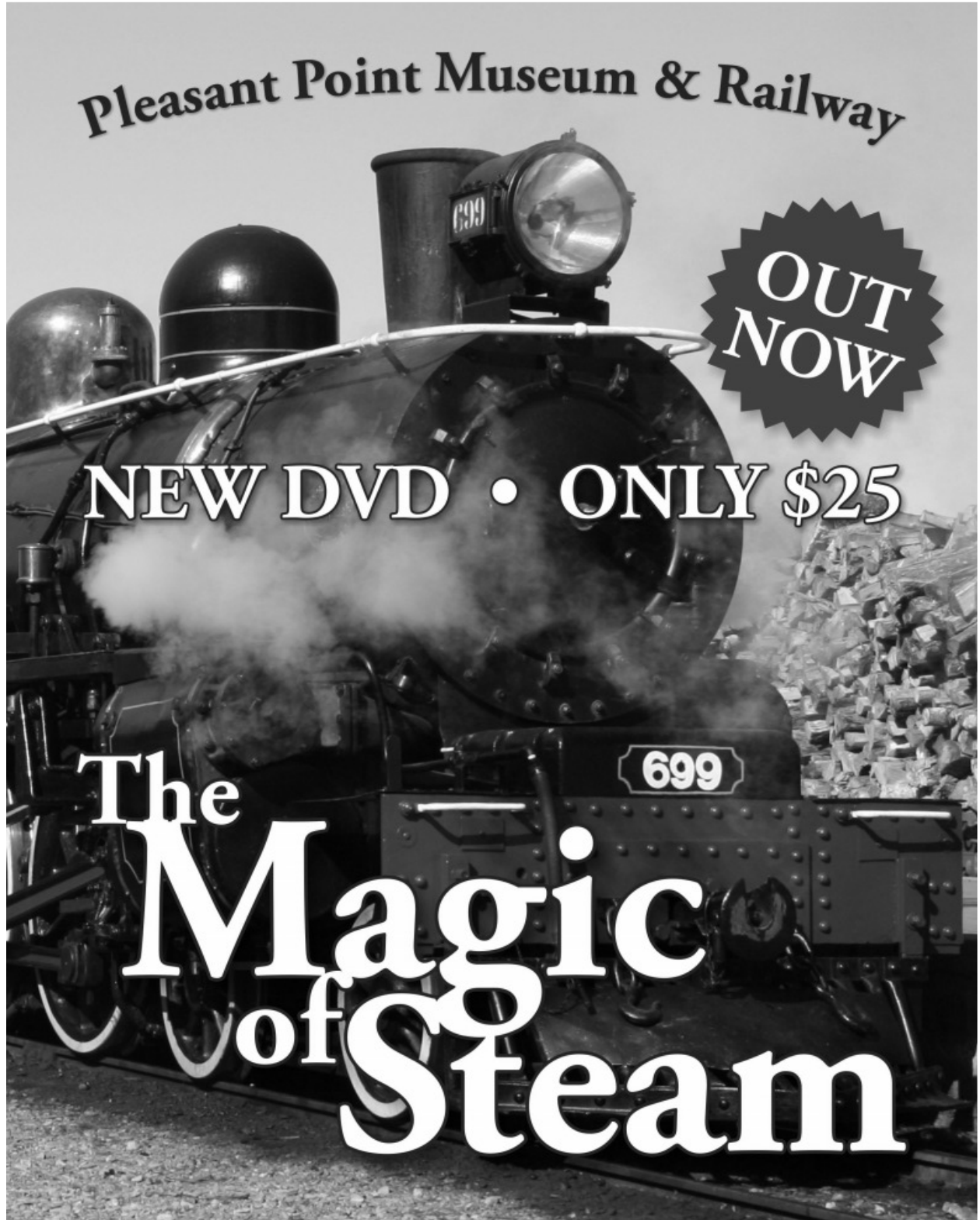
"During the year a colour photocopier and a new sound system was purchased. We were assisted in this by grants from the Tamaki Community Board and the Mt Wellington Foundation.

"The New Zealand Federation of Historical Societies has organised a couple of events recently. One was a visit to Huntly attended by four members from our Society. Mary Gillespie's report about the day appeared in our newsletter and was also used in the Federation newsletter. I hope that no copyright was breached."

[KIT Editor's note: The Huntly report used in Keeping In Touch in July 2009 was headed "From Otahuhu Despatch, Otahuhu Historical Society", and Mary Gillespie clearly identified as the author at the end of the report. Where content is directly used from society newsletters, the practice of clearly indicating the ownership and source of the text is maintained.]

Ray Goodger has been made a Life Member of the Society. According to the Society's June newsletter: "Ray and Wilma joined the Otahuhu Historical Society in 1997 and Ray joined the committee in 1999. He was elected President in 2000 and held this position until 2008 when it became necessary for him to spend more time with Wilma. As no President was forthcoming Ray continued as Vice President until this year, but still picking up many of the duties of President. Over the years Ray has been one of our handymen about the rooms, doing maintenance work and building display shelving.

"The Life Membership recognises the many hours that Ray has contributed to the Society. Now that he has stepped down to the committee he and Wilma will have more time to enjoy the



Pleasant Point Museum & Railway

OUT
NOW

NEW DVD • ONLY \$25

The
Magic
of
Steam

Available from Pleasant Point Museum and Railway
email: ba.mc.blanchard@xtra.co.nz | Ph: 03 686 2269



www.bellbirdpictures.co.nz

2010

peaceful vista from their current home on the banks of the Tamaki River.”

Petone

Research by the Society’s secretary Roy Hewson pinpointed the likely spot in Petone where the first game of rugby union between two provincial sides was played in the North Island: near the current site of the Petone railway station. Members of the Society attended the unveiling of a plaque on 17 July marking the place of the match, held 12 September 1870. As the Society’s newsletter reported: “The plaque has been laid outside Apex Print on the corner of Nevis Street and Hutt Road. Despite the rain some 80 plus people turned up including about 25 people who were descended from Charles Monro who brought the rugby rules to New Zealand, The president of the NZ Rugby Union, chairman of Wellington Union and Chairman of Tasman Union (was Nelson). Clive Akers from Palmerston North was present He writes the Rugby Almanac and he also researched and wrote the book MONRO about Charles Monro. The curator of the Palmerston North Museum was also present ...After the short presentation we all went for morning tea at the Petone Rugby Club. This plaque commemorates another first for Petone.”

Silverdale

From the President’s report, May 2010

“Once again our year has been dominated by the maintenance of buildings at the Pioneer Village. The main focus has been on refurbishment of the Methodist Chapel. Last year we painted the interior and our maintenance crew - Don McErlich, Robin Langdon and Pat Kenworthy, Colin Smith, Bob Bartlett, Bill Dawson and Todd Stansberry - replaced rotten weatherboards and base boards. This year the old roof was removed revealing several rotten beams which were replaced, and a new roof was installed. We are most grateful for the funding for the new roof and exterior painting provided by an ASB grant and generous donations from the Bayes Trust, Whangaparaoa Methodist Church, the Pioneer Bar Orewa and several Society members. We are now ready to celebrate the opening of the Chapel for worship in Silverdale in 1860 – 150 years ago.

“Other maintenance has included replacing the deteriorating spouting on the Schoolmaster’s House, for which we received a grant from the Rodney District Council’s Heritage Fund. Work has continued on the Upper Waiwera School building and the access ramp has now been completed. Plans have been approved for an extension to this building to house the 1970s fire engine at present stored off site.

“Other highlights this year included setting up a new website to replace our earlier one and the launch of the Rodney Museums brochure promoting six museums (including the Pioneer Village) in Rodney District.”

Waikato

From the Society’s August newsletter.

“Fund raising from all sources amounted to a profit of \$1,405.08 for 2009/10, which was an improvement over the \$710.60 that was raised during the 2008/09 financial year.

“The society has received generous support from members in donations towards replacing the notice at the gate of Hockin House. At present, \$640.75 has been raised to meet the approximate cost of \$1,000.00 after the President donated \$200.00 during the committee meeting in July. Other committee members will add their donations over the next two months, so the society should have enough money to order the new sign in September.

“There were many other achievements this year. For, example, the administration has been successful in receiving grants and sponsorship. A grant of \$1,000.00 was received from Hamilton City Council for administration in the 2009/10 financial year. Hamilton City Council’s grant helped the society to pay for its: electricity, insurances, security system monitoring, telephone and water rates. Hockin House received \$1,091.65 in maintenance during the 2009/10 financial year. Also, the society was fortunate to receive donations of work. For example, Hamilton Community Works Probation Service raked the leaves and pruned the agapanthus in the grounds.”

Rangiriri Heritage Centre

From an email received:

“I am wondering if there is any way we can let Federation Members know that we are trying to sell the Rangiriri Heritage Centre.

“It would be a great little business for an historian who wants to live on site or nearby. I have enjoyed the History side of the business and many more School Groups & tour parties are calling. There is someone who would like to lease the Tearoom business if the buyer requires this. Other areas are leased.

“We are particularly keen for the work at Rangiriri to continue but my husband & I can not continue to do this.”

Christine & Dan Madsen
heritage@ps.gen.nz
Rangiriri Heritage Centre, 12 Rangiriri Road
Rangiriri

University of Otago Anthropology Society

The University of Otago Anthropology Society organises social and training events for Archaeological students at the University of Otago. Members are primarily archaeologists who range from 1st year students through to Masters and PhD students, and who are trained in many different aspects of archaeology, including historic archaeology. If your group has a project which requires archaeological research or investigation, or analysis of materials and write up, the UOAS can advertise this amongst its extensive membership free of charge. We have students looking for both experience and employment. Although based in Dunedin, our members come from across the country and many are available over the summer months.

For more information, please contact Alex Bell, belal514@student.otago.ac.nz



The Karaka Historical Society Inc.

presents a parade of

'Wedding Gowns Through the Ages'



Saturday October 2nd 2010 at 7.30pm

Karaka War Memorial Hall

Compere - Anne Reyes

Tickets - \$40.00

Limited Tickets - Contact Sue: 09 2927801 or Violet: 09 2363875

Lucky ticket draws, Raffle, Light supper.

All funds raised will go towards the completion of our new Museum building.

Our sincere thanks to the sponsors of the lucky ticket draws and raffle :

Karaka Kitchen - 257 Linwood Road, Karaka 092919303



Pukekohe Flight Centre - 127 King Street, Pukekohe 092380350 New To You Boutique - Mauku Rd, Patumahoe 021 811457

Hugh & Rae Ross - Vintage Wedding Car Hire 092948648

Ida Holmes - Special Occasion Cakes, Flowers 092358800

Other Organisations

From Christchurch City Council, April 2010

Plans underway for Grubb Cottage

Restoration work on Grubb Cottage, the most significant colonial domestic dwelling in Lyttelton, will be carried out by Fletcher Construction and is scheduled to commence on Monday 3 May, 2010.

The works will include stabilising and partly refurbishing the cottage, with its character and original fittings to be maintained where possible.

Grubb Cottage Trust Chairman, Sam Strati, says the cottage will be opened to the public as a visitor experience after the works have been completed.

"The end use will be a dynamic, living museum providing a contemporary and changeable space for portraying the history of Lyttelton. Grubb Cottage is significant because it was owned by prominent settler John Grubb and his family, who were key to the development of Lyttelton and its port.

"The rear portion is one of the oldest surviving buildings in the area, having been built soon after formal colonisation began. As a whole, the dwelling is an excellent example of the modest cottages built during European colonisation," he says.

The Grubbs were a key family in the development of Lyttelton and its port and in turn associated with the development of Christchurch and the Can-

terbury region. John Grubb made a significant contribution to early Lyttelton society and was involved in the building of the first jetty which saw the passengers of the First Four Ships of the Canterbury Association ashore in 1850. John's son James Grubb continued the prominence of the family name in the town when he became Mayor in 1902 and the Grubb family continued to have a recognised presence in the Lyttelton community until the 1960s.

The Cottage, at 62 London Street, was bought by the Council in 2006 to ensure its protection. Initially, the Council intended to on-sell the cottage to the Trust but decided it would retain ownership and commit \$250,000 to fund the necessary conservation and stabilisation work. The project is expected to take around twelve weeks to complete, with a public opening to be held sometime after this. However, timing will be subject to weather and any archaeological related issues or discoveries.

Since purchasing the Cottage, the Council has funded condition and structural reports, and a conservation plan which included a full assessment of the heritage values of the Cottage and its outbuildings.

The Trust, who will manage the day to day operation of the cottage, plans to introduce an art award and collaborate with other Lyttelton heritage sites to provide a heritage trail of the Cottage, Time Ball, cemetery and gaol. "We will be looking for ongoing funding and hope the Lyttelton and wider community will get behind us in supporting this project," says Mr Strati.



Grubb Cottage. Photo: courtesy Christchurch City Council.